

## Product 7 - *MED-1 Off-Road Recovery and Transport Unit*

**Self-contained 6x6 vehicle capable of patient triage and transport between disaster areas and support site**

A fully self-contained aluminum 7.6m (25 ft) integrated care vehicle with 5.5m (18 ft) 'slide-out' to create extra space:

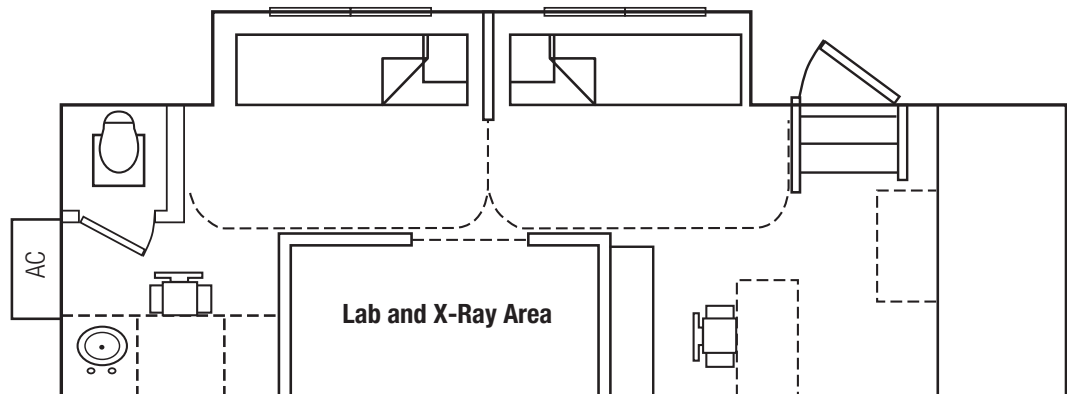
- ⊙ Mobile unit includes two monitored patient examination and treatment beds, documentation station, built-in consumable medication and medical supply storage.
- ⊙ Includes diesel generator, two laptops for registration and patient tracking and appropriate paperwork/forms.
- ⊙ HVAC and on-board generator
- ⊙ Includes a toilet, lab and X-ray area
- ⊙ NOT including medications or consumable supplies

### Optional Medical Equipment:

- ⊙ Two ICU monitors and one defibrillator
- ⊙ Four diagnostic sets
- ⊙ Portable digital X-ray with PACS

### Information system:

- ⊙ Optional satellite dish
- ⊙ Information technology equipment



*This rendering/photograph is for promotional purposes only. Actual unit may be customized to fit your specific needs.*